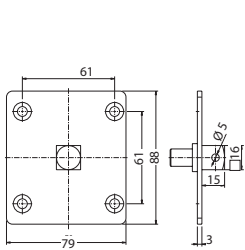


RolloTube Basic

Accessories

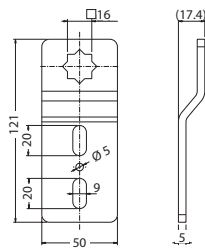
Drive bearings

RolloTube Basic Large Ø 60 mm



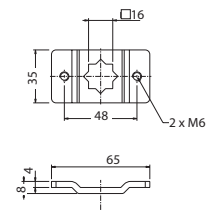
4016-LHK

Adapter ring for hand crank, 16 mm square, including screws and nuts



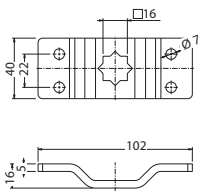
4016-01

Drive bearing, prefabricated box, 16 mm star, offset on one side



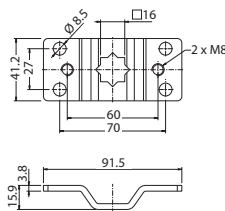
4016-03

Drive bearing for awnings, Semicircle 48 mm, 16 mm star, flat



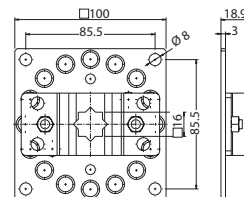
4016-04

Drive bearing, 16 mm star, offset, four hole



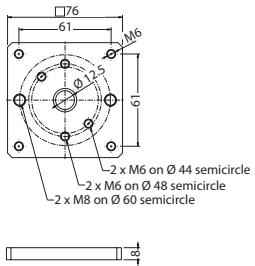
4016-05

Drive bearing, 60 mm semicircle, 16 mm star, offset, four hole



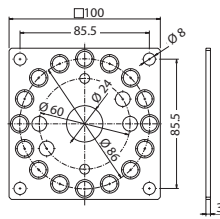
4016-14

Drive bearing on base plate including screws and nuts



4016-15

Drive bearing for drives with manual override, awnings, 48 mm and 60 mm semicircle



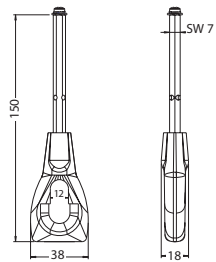
4016-16

Drive bearing for drives, with hand crank



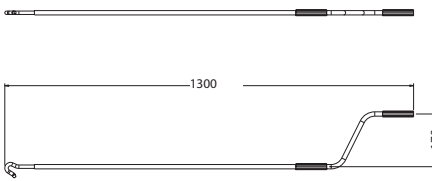
GGK 539-1

Adjustment tool



GGK 539-13

Eyelet for hand crank



GGK 539-14

Hand crank, Length 1,300 mm