

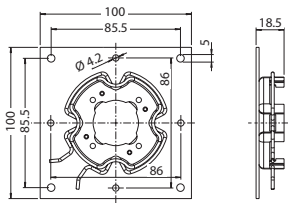


RolloTube Basic

Accessories

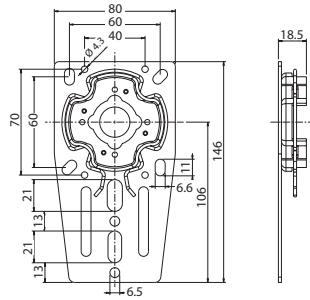
Drive bearings

RolloTube Basic Medium Ø 45 mm



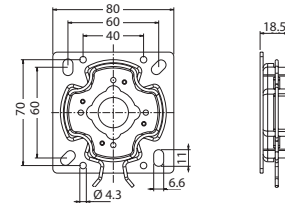
4015K-01

Click drive bearing for VEKA and EXTE roller shutter top boxes



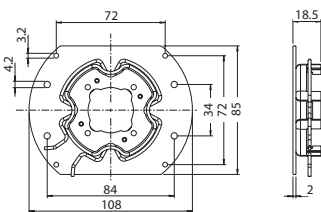
4015K-04

Click-ready box support, angled, height-adjustable



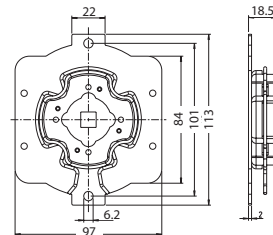
4015K-05

Click universal drive bearing for mounting on masonry or front box / top box units



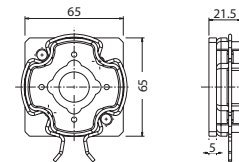
4015K-06

Click drive bearing for Kömmerling, Rehau and Thyssen roller shutter top boxes



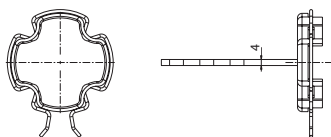
4015K-07

Click drive bearing for Stakusit roller shutter top boxes



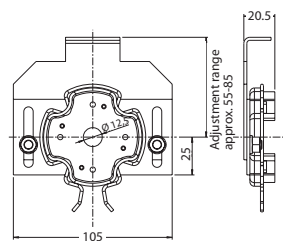
4015K-09

Click drive bearing for awnings with M6 screw thread on a 48 mm semicircle or M8 on a 60 mm semicircle



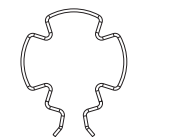
4015K-10

Click drive bearing for plastering into masonry



4015K-11

Click clamp bearing for blind capsule systems



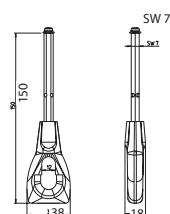
EFE 223-4

Retaining spring, spare part for Click drive bearing



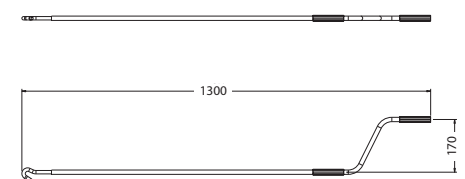
GGK 539-1

Adjustment tool



GGK 539-13

Eyelet for hand crank



GGK 539-14

Hand crank, length 1.3 mm

