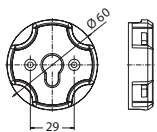


RolloTube Basic

Accessories

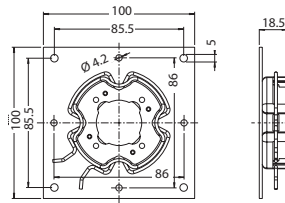
Drive bearings

RolloTube Basic Small Ø 35 mm



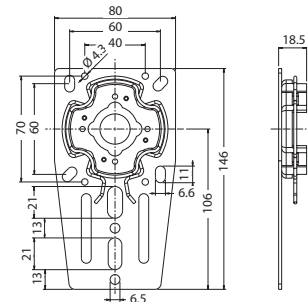
4015K-S

Adapter ring for Click drive bearing



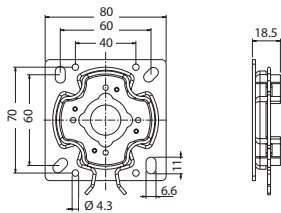
4015K-01

Click drive bearing for VEKA and EXTE roller shutter top boxes



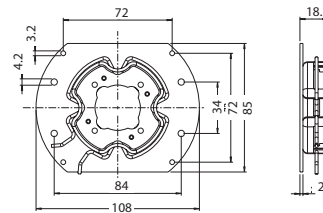
4015K-04

Click-ready box support, angled, height-adjustable



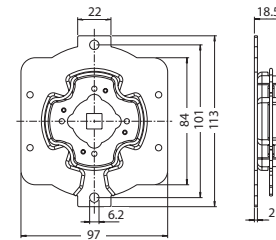
4015K-05

Click universal drive bearing for mounting on masonry or front box / top box units



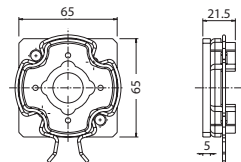
4015K-06

Click drive bearing for Kömmerling, Rehau and Thyssen roller shutter top boxes



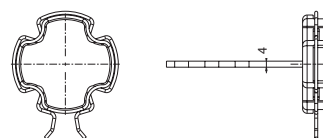
4015K-07

Click drive bearing for Stakusit roller shutter top boxes



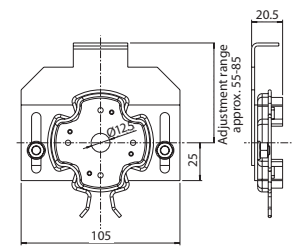
4015K-09

Click drive bearing for awnings with M6 screw thread on a 48 mm semicircle or M8 on a 60 mm semicircle



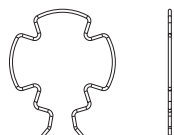
4015K-10

Click drive bearing for plastering into masonry



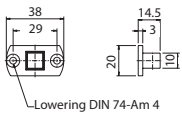
4015K-11

Click clamp bearing for blind capsule systems



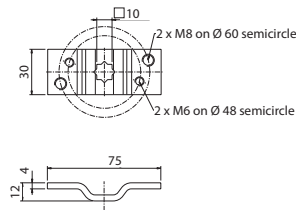
EFE 223-4

Retaining spring, spare part for Click drive bearing



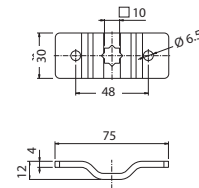
4010-5

Adapter ring, 10 mm square for screwing on against the head of the tubular motor



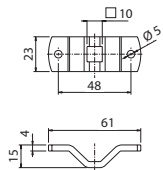
4010-01

Awning drive bearing with M6 screw thread on 48 mm semicircle or M8 on 60 mm semicircle



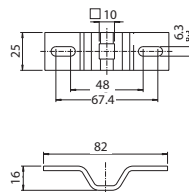
4010-02

Drive bearing, 10 mm star, offset, two-hole 48 mm semicircle



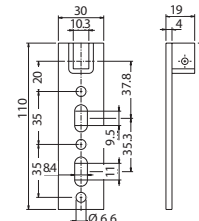
4010-03

Drive bearing, offset, two hole 48 mm semicircle



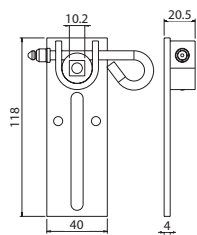
4010-04

Awning drive bearing for awnings with 48 mm semicircle



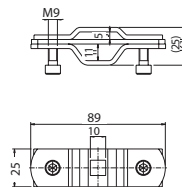
4010-05

Drive bearing for prefabricated boxes, height adjustable



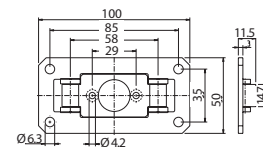
4010-06

Roll-off prefabricated box support, height adjustable, can be disengaged



4010-07

Universal clamp bearing for mounting on a counter bearing provided by the client



3313

Universal drive bearing for front box / top box units and where space is restricted



GGK 539-12

Adjustment tool