

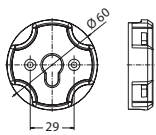


# RolloTube Comfort Radio

## Accessories

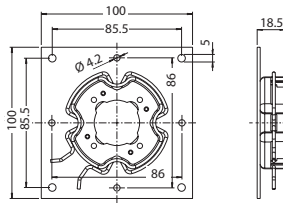
### Drive bearings

RolloTube Comfort Radio Small Ø 35 mm



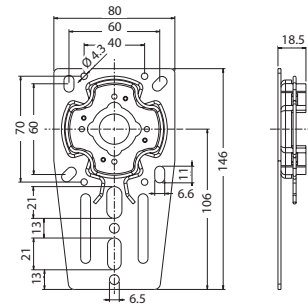
**4015K-S**

Adapter ring for click drive bearing



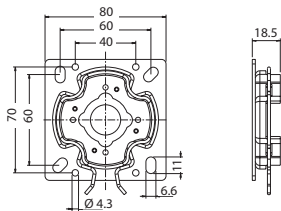
**4015K-01**

Click drive bearing for VEKA and EXTE roller shutter top boxes



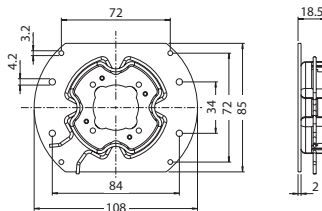
**4015K-04**

Click-ready box support, angled, height-adjustable



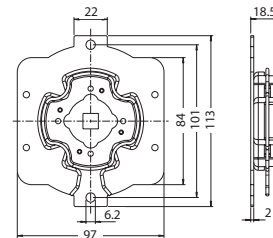
**4015K-05**

Click universal drive bearing for mounting on masonry or front box / top box units



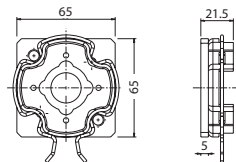
**4015K-06**

Click drive bearing for Kömmerling, Rehau and Thyssen roller shutter top boxes



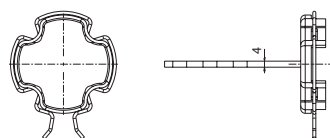
**4015K-07**

Click drive bearing for Stakusit roller shutter top boxes



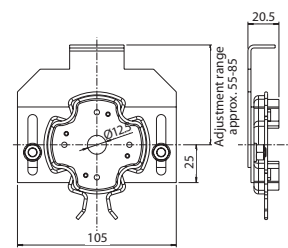
**4015K-09**

Click drive bearing for awnings with M6 screw thread on a 48mm semicircle or M8 on a 60mm semicircle



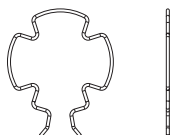
**4015K-10**

Click drive bearing for plastering into masonry



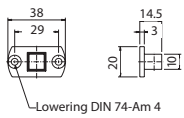
**4015K-11**

Click clamp bearing for blind capsule systems



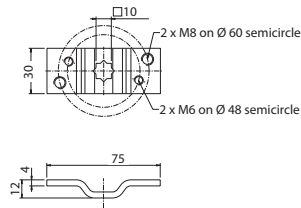
**EFE 223-4**

Retaining spring, spare part for Click drive bearing



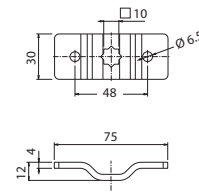
**4010-S**

Adapter ring, 10 mm square for screwing on against the head of the tubular motor



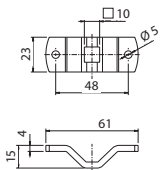
**4010-01**

Awning drive bearing with M6 screw thread on 48 mm semicircle or M8 on 60 mm semicircle



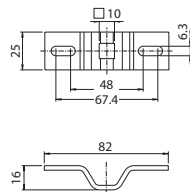
**4010-02**

Drive bearing, 10 mm star, offset, two-hole 48 mm semicircle



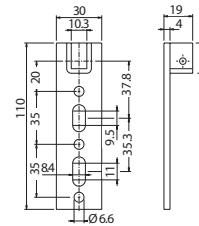
**4010-03**

Drive bearing, offset, two hole 48 mm semicircle



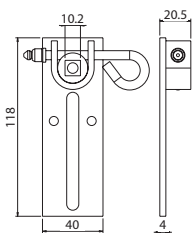
**4010-04**

Awning drive bearing for awnings with 48 mm semicircle



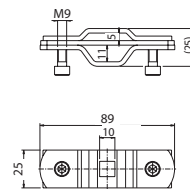
**4010-05**

Drive bearing for prefabricated boxes, height adjustable



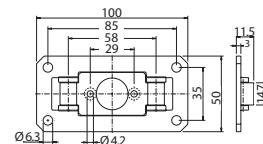
**4010-06**

Roll-off prefabricated box support, height adjustable, can be disengaged



**4010-07**

Universal clamp bearing for mounting on a counter bearing provided by the client



**3313**

Universal drive bearing for front box / top box units and where space is restricted